



Structures | Scaffolding | Formworks

RINGLOCK SCAFFOLDING



RINGLOCK SCAFFOLDING

The Ringlock scaffolding system is one of the types of modular scaffolding. It enables workers to set up, use, and disassemble a temporary work structure with speed and efficiency, therefore saving on time and labor cost. Ringlock is one of the most sophisticated and complete scaffolding systems available.

ADVANTAGES:

- Quick to erect & dismantle.
- Rosette allows up to four braces & four horizontals attachment.
- Pre-installed components minimizes wastage.
- Excellent frame-body stability.
- Easy storage & maintenance.

APPLICATIONS:

- Access Scaffolding
- Mobile Scaffolding
- Shoring Towers

SURFACE FINISHES:

- Painted
- Galvanized

SPECIFICATIONS:

• Standards & Ledgers

OD: 48.3mm

Thickness: 3.2mm

• Diagonal Brace

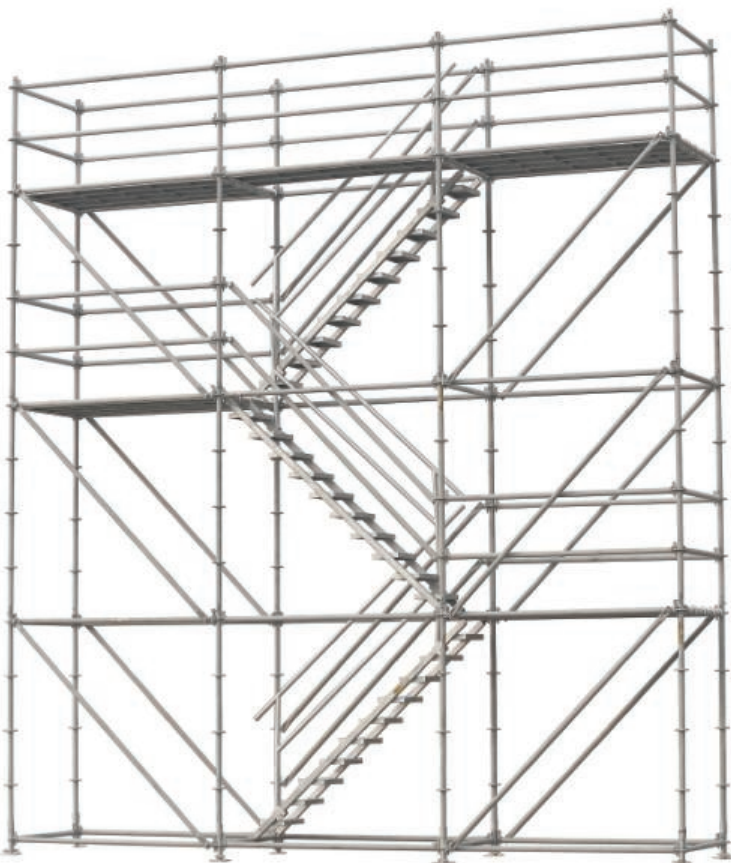
OD: 48.3mm

Thickness: 2.6mm

• Grade Q235

* Special thicknesses are available upon request.

* Other grades may be available upon request.



Scan to view online

scaffolding@iil.com.pk



RINGLOCK SCAFFOLDING

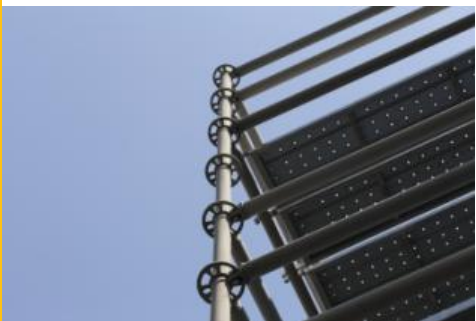
QUICKLY ERECTABLE STRUCTURE



EASY ACCESS AND SAFE PLATFORM



STRONG CONNECTIONS



Scan to view online

scaffolding@iil.com.pk



RINGLOCK SCAFFOLDING

COMPONENTS



Standard



Hollow Base
Jack



Ledger



Diagonal
Brace



Pig Tail
Pin



Base
Collar



Spigot



Steel
Plank



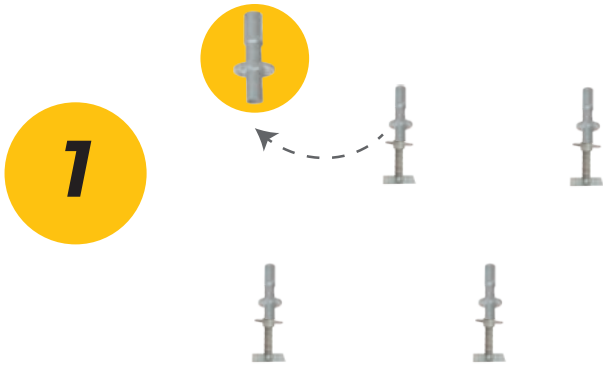
Scan to view online

scaffolding@iil.com.pk



RINGLOCK SCAFFOLDING

ASSEMBLY GUIDE



Place the jacks at the desired location and add base collar on top of each jack

2



Place standards on top of the base collars

3



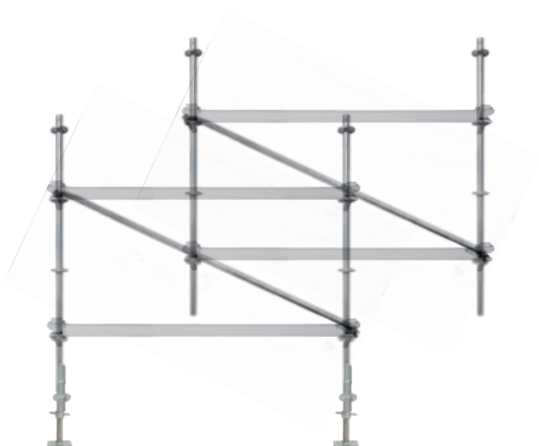
Fix ledgers on each standard at the desired height using a slight hammer push

4



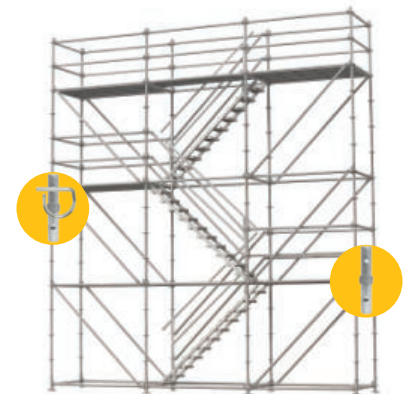
Connect each side of diagonal brace to rosettes on each standard

5



Repeat step 1-4 until desired height is reached

6



Place steel plank on top of the ledgers where the platform is required



Scan to view online

scaffolding@iil.com.pk



RINGLOCK

SCAFFOLDING

PRODUCT RANGE

ITEM	DESCRIPTION
Standard 500mm	Thickness 3.20mm
Standard 1000mm	Thickness 3.20mm
Standard 1500mm	Thickness 3.20mm
Standard 2000mm	Thickness 3.20mm
Standard 2500mm	Thickness 3.20mm
Standard 3000mm	Thickness 3.20mm
Ledger 3 ft	Thickness 3.20mm
Ledger 4 ft	Thickness 3.20mm
Ledger 5 ft	Thickness 3.20mm
Ledger 6 ft	Thickness 3.20mm
Ledger 7 ft	Thickness 3.20mm
Diagonal 3 ft	Thickness 2.60mm
Diagonal 4 ft	Thickness 2.60mm
Diagonal 5 ft	Thickness 2.60mm
Diagonal 6 ft	Thickness 2.60mm
Diagonal 7 ft	Thickness 2.60mm
Adjustable Hollow Base Jack (Galvanized)	M38 X 600 mm
Spigot / Coupling Pin	38 mm X 3.5 mm X 270 mm
Base / Starter Collar	-
Pig Tail Pin	11mm
Steel Planks (with & without hooks)	10 in x 3 ft up to 10 in x 10 ft

* Other sizes available on request



Scan to view online

scaffolding@iil.com.pk



Structures | Scaffolding | Formworks

